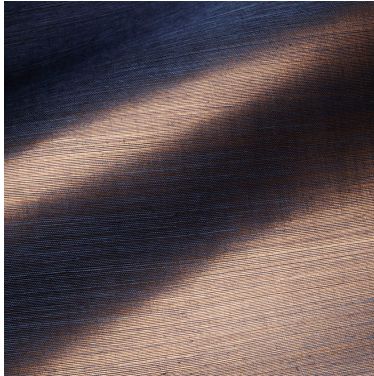


OMEXCO  
Fine Belgian Wallcoverings

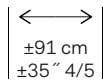


SUMATRA  
SISAL ON NON-WOVEN BACKING

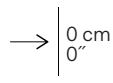


NB : The portrayed colours may differ from reality.

References S U A 2  
Composition: sisal on non-woven backing  
Weight:  $\pm 210 \text{ g/m}^2$  ( $\pm 6,2 \text{ oz/sq yd}$ )



Width of the  
wallcovering.



Pattern repeat  
is 0 cm (0") and  
the design does  
not need to be  
matched.



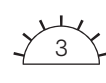
Apply a ready mixed  
pva or eva clear  
adhesive directly  
to the wall, moisten  
the back of the wall-  
covering.



Sold by the  
metre/yard.  
No minimum.



Ecological.



Light resistant:  
Xeno test 3.



This design  
requires reverse  
hanging.

More information and samples are available on request.

Omexco n.v. - Ambachtenlaan 12 - 3001 Heverlee - Belgium  
t. +32 16 40 18 80 - [info@omexco.com](mailto:info@omexco.com) - [www.omexco.com](http://www.omexco.com)