

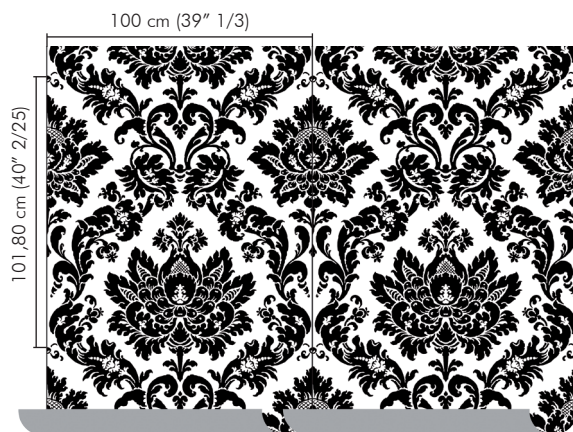
OMEXCO
Fine Belgian Wallcoverings



PALAZZO
NON-WOVEN TEXTILE WALLCOVERING



NB : The portrayed colours may differ from reality.

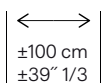


References PAL6

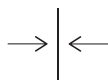
Composition: mixture of cellulose and polyester

Weight: $\pm 196 \text{ g/m}^2$ ($\pm 6,53 \text{ oz/sq yd}$)

Custom colouring on request



Width of the wallcovering.



Pattern repeat is $\pm 101,80 \text{ cm}$ ($40'' \frac{2}{25}$) and the design needs a straight match.



Fire resistant:
EU: B, s1-d0
US: class A



Sold by the metre/yard.
No minimum.



Spongeable during installation.



Washable after installation.



Light resistant:
Xeno test 7.



Apply a ready mixed PVA or EVA clear adhesive directly to the wall, no need to humidify the back of the wallcovering.



Product complying with the council directive 2014/90/EU on marine equipment.



Seamless.



Manufactured with recycled fibres.



Breathable.



Printed with solar energy.



The mark of responsible forestry



Ecological.

More information and samples are available on request.

Omexco n.v. - Ambachtenlaan 12 - 3001 Heverlee - Belgium
t. +32 16 40 18 80 - info@omexco.com - www.omexco.com