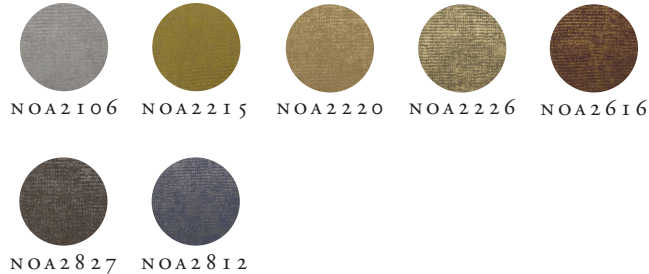
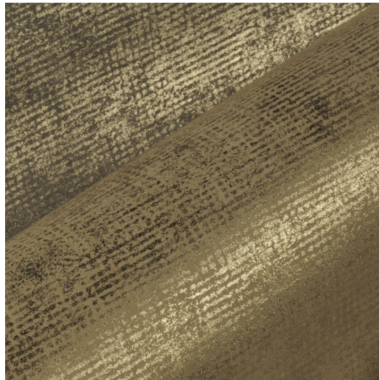


OMEXCO
Fine Belgian Wallcoverings



NOMAD

NON-WOVEN TEXTILE WALLCOVERING with metallic effect



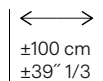
NB: The portrayed colours may differ from reality.

References NOA 2

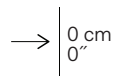
Composition: mixture of cellulose and polyester

Weight: $\pm 184 \text{ g/m}^2$ ($\pm 5,37 \text{ oz/sq yd}$)

Custom colouring on request.



Width of the wallcovering.



Pattern repeat is 0 cm (0") and the design does not need to be matched.



Fire resistant:
EU: B, s1-d0
US: class A



Spongeable during installation.



Washable after installation.



Light resistant:
Xeno test 6-7.



Apply a ready mixed PVA or EVA clear adhesive directly to the wall, no need to humidify the back of the wallcovering.



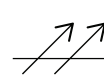
Ecological.



Seamless.



Manufactured with recycled fibres.



Breathable.



Printed with solar energy.



Product complying with the council directive 2014/90/EU on marine equipment.



Sold by the metre/yard. No minimum.



The mark of responsible forestry



This design requires reverse hanging.

More information and samples are available on request.

Omexco n.v. - Ambachtenlaan 12 - 3001 Heverlee - Belgium
t. +32 16 40 18 80 - info@omexco.com - www.omexco.com