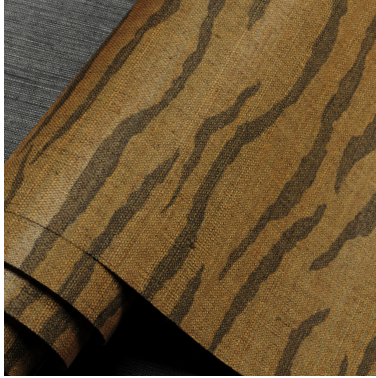


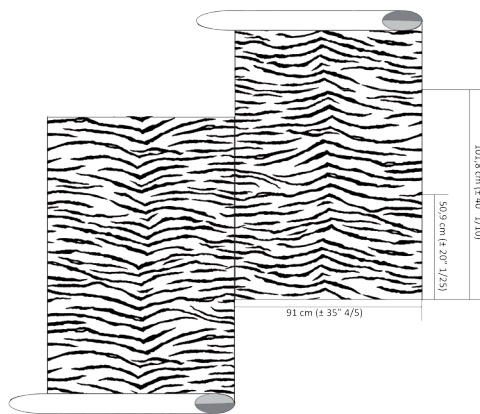
OMEXCO
Fine Belgian Wallcoverings



JUNGLE
PRINTED SISAL ON NON-WOVEN BACKING



NB: The portrayed colours may differ from reality.



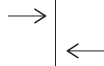
References JUA 2

Composition: sisal fibres on non-woven backing

Weight: $\pm 262 \text{ g/m}^2$ ($\pm 7,64 \text{ oz/sq yd}$)



Width of the
wallcovering.



The pattern
repeat of the
design is 101,8
cm (max. 50,9)
($\pm 40" 1/10$ max.
 $\pm 20" 1/25$) and
needs an offset
match.



Light resistant:
Xeno test 4.



Sold by the
metre/yard.
No minimum.



Ecological.



This design
requires reverse
hanging.



Apply a ready
mixed PVA or EVA
clear adhesive
directly to the wall,
no need to humidify
the back of the
wallcovering.

These wallcoverings are made by craftsmen. Plant fibres are selected, washed, sun-dried and hand woven on traditional looms. The nature of these plant fibres, as well as the production process, explain irregularities in the aspect and thickness of the wallcovering, as well as colour shades, which give the product its charm and unique character. Differences of colour and aspect between batches, or even from one strip to another, are unavoidable. We can't guarantee a perfect colour match between the sample in the pattern book and the delivered goods.

More information and samples are available on request.

Omexco n.v. - Ambachtenlaan 12 - 3001 Heverlee - Belgium
t. +32 16 40 18 80 - info@omexco.com - www.omexco.com