



GRAPHITE
PRINTED MICA ON NON-WOVEN BACKING



GRA7011



GRA7012



GRA7025

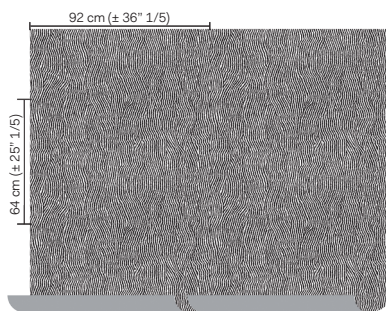


GRA7026

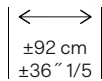


GRA7014

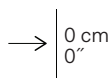
NB: The portrayed colours may differ from reality.



References GRA 7
Composition: printed mica on non-woven backing
Weight: $\pm 333 \text{ g/m}^2$ ($\pm 9,71 \text{ oz/sq yd}$)



Width of the wallcovering.



Pattern repeat is 0 cm (0") and the design does not need to be matched.



Fire resistant:
EU: B, s1-d0
US: class A



Sold by the metre/yard.
No minimum.



Ecological.



Apply a ready mixed PVA or EVA clear adhesive directly to the wall, no need to humidify the back of the wallcovering.



Light resistant:
Xeno test 6.

More information and samples are available on request.