

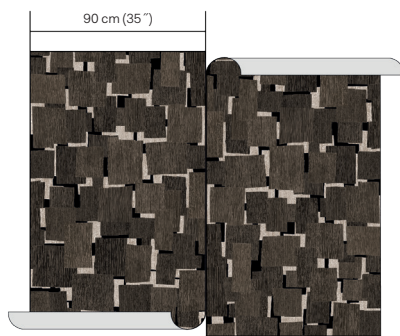
OMEXCO
Fine Belgian Wallcoverings



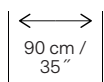
ECLIPSE
PRINTED CORK



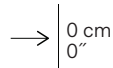
NB: The portrayed colours may differ from reality.



References ECP20 - NORMA
Composition: printed cork
Weight: $\pm 300 \text{ g/m}^2$ (8.85 oz/sq yd)
Custom colouring: 100 m / 110 yds min.



Width of the
wallcovering.



Pattern repeat
is 0 cm (0") and
the design does
not need to be
matched.



Fire resistant:
EU: D, s1-d0
US: class A.



Sold by the
metre/yard.
No minimum.



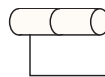
Light resistant:
Xeno test 7.



Apply a ready
mixed PVA or EVA
clear adhesive
directly to the wall.



Ecological.



Totally or virtually
seamless.



Printed with
solar energy.



This design
requires reverse
hanging.

More information and samples are available on request.

Omexco n.v. - Ambachtenlaan 12 - 3001 Heverlee - Belgium
t. +32 16 40 18 80 - info@omexco.com - www.omexco.com