

OMEXCO
Fine Belgian Wallcoverings



ECLIPSE
PRINTED WALLCOVERING

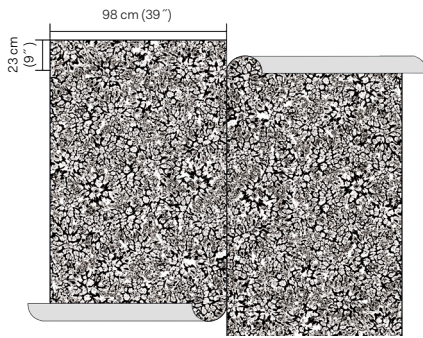


ECP301

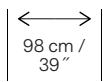


ECP302

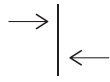
NB: The portrayed colours may differ from reality.



References ECP30 - NEBULA
Composition: printed wallcovering
Weight: $\pm 211 \text{ g/m}^2$ (6.22 oz/sq yd)
Custom colouring: 100 m / 110 yds min.



Width of the wallcovering.



Pattern repeat is 23 cm (9") and the design needs an offset match.



Fire resistant:
EU: B, s1-d0
US: class A.



Sold by the metre/yard.
No minimum.



Light resistant:
Xeno test 6.



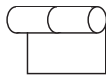
Washable.



Apply a ready mixed PVA or EVA clear adhesive directly to the wall, no need to humidify the back of the wallcovering.



Ecological.



Totally or virtually seamless.



Printed with solar energy.



This design requires reverse hanging.

More information and samples are available on request.