

OMEXCO  
Fine Belgian Wallcoverings



ECLIPSE  
PRINTED CORK

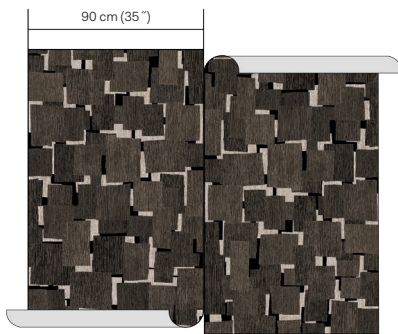


ECP201

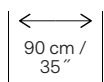


ECP202

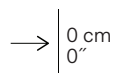
NB: The portrayed colours may differ from reality.



References ECP20 - NORMA  
Composition: printed cork  
Weight:  $\pm 299 \text{ g/m}^2$  (8.82 oz/sq yd)  
Custom colouring: 100 m / 110 yds min.



Width of the wallcovering.



Pattern repeat is 0 cm (0") and the design does not need to be matched.



Fire resistant:  
EU: D, s1-d0  
US: class A.



Sold by the metre/yard.  
No minimum.



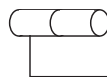
Light resistant:  
Xeno test 7.



Apply a ready mixed PVA or EVA clear adhesive directly to the wall, no need to humidify the back of the wallcovering.



Ecological.



Totally or virtually seamless.



Printed with solar energy.



This design requires reverse hanging.

More information and samples are available on request.

Omexco n.v. - Ambachtenlaan 12 - 3001 Heverlee - Belgium  
t. +32 16 40 18 80 - info@omexco.com - www.omexco.com